



## **SGC-120: the new standard in super heavy lifting**



**SGC-120: RELIABLE HEAVY LIFTING MACHINE  
WITH HIGH LOAD MOMENT**

**SGC-120: LIMITED FOOTPRINT**

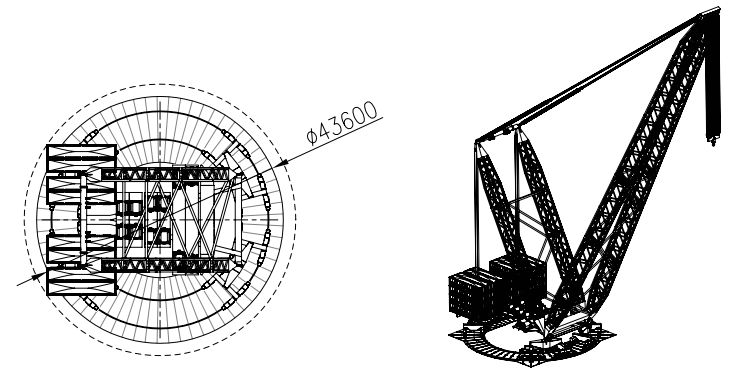
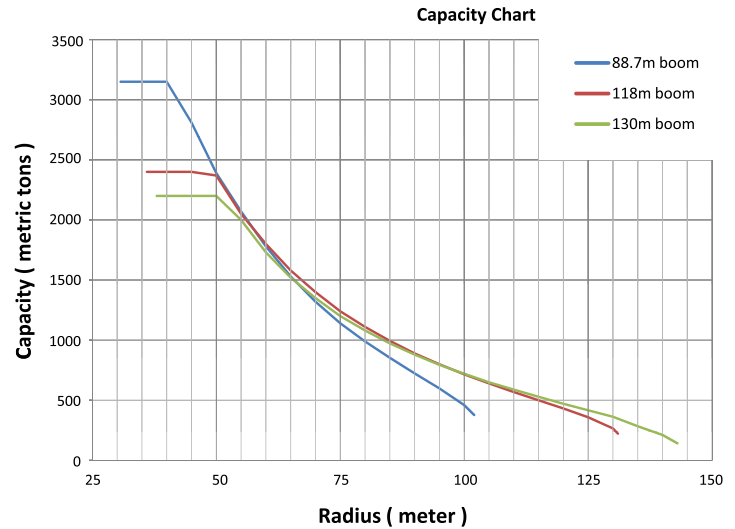
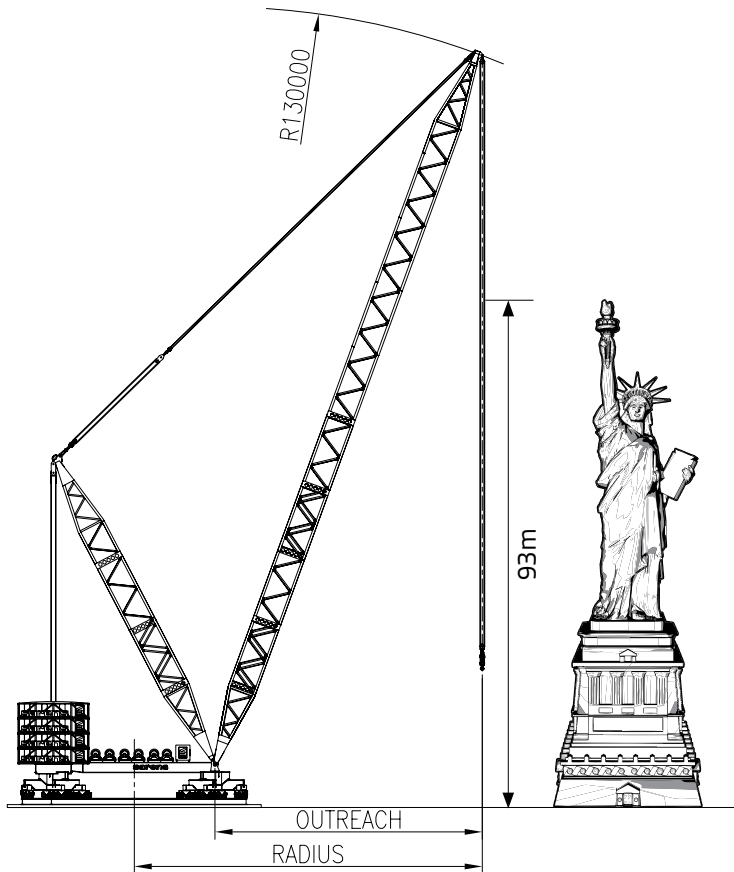
**SGC-120: LOW GROUND BEARING PRESSURES**

**SGC-120: ON SITE FLEXIBILITY**

**SGC-120: FLEXIBLE WORLDWIDE TRANSPORTATION**

**SGC-120: VERSATILE LIFTING MACHINE**

nothing too heavy, nothing too high



# SGC-120: the new standard in super heavy lifting

## SGC-120: RELIABLE HEAVY LIFTING MACHINE WITH HIGH LOAD MOMENT

- Crane design according to American and European crane standards
- CE certified
- The crane's power train consists of different power packs: with full redundancy
- 120.000 tonmeter load moment (885.073.200 lbf\*ft)
- Lifting capacity: 3.200T @ 30m and > 1.000T @ 80m

## SGC-120: LIMITED FOOTPRINT

### Ring Design:

- The ring design of the SGC-120 makes the crane relatively compact and stable and enables the crane to operate in confined areas, so there is a minimal impact on other site work
- The crane has two slewing rings:
  - Inner ring diameter: 28.424 mm
  - Outer ring diameter: 38.348 mm
- Load spreading mats outside diameter: 43.600 mm

## Ballast:

- The ballast of the crane consists of 36 special reinforced 40 ft containers filled with locally sourced material (up to 3600 T ballast)

## SGC-120: LOW GROUND BEARING PRESSURES

- No special expensive ground preparations nor foundations are required from the client thanks to low ground bearing pressures (20 T / m<sup>2</sup> or 2,05 T/ft<sup>2</sup>), achieved by:
  - Unique design using two support rings
  - Equally loaded bogies with a high number of wheels
  - Large load spreading mats underneath the two rings, standard supplied with the crane

## SGC-120: ON SITE FLEXIBILITY

### Winches

- Reliable and easily operated hydraulic winches equipped with control technology
- High single line pull of 600 kN (135000 lbf) on lifting winches

- Line speed of 20 m/min (65.6 ft/min)
- The SGC-120 is equipped with 6 winches, redundant encoder synchronisation allowing the full range of capacities to be lifted (no need for alternative system like strandjacks to reach maximum capacity).
- Operational wind speeds up to 22.4m/s (50.1 mph)
- Controlled slew operation up to the mm thanks to full axis synchronisation control of the 4 bogies

## SGC-120: FLEXIBLE WORLDWIDE TRANSPORTATION

The SGC-120 can be transported in standard shipping containers, quantity depending on the configuration (if standard main boom; approx. 135 containers)

## SGC-120: VERSATILE LIFTING MACHINE

- Lifting modules, PAR, PAU, FPSO's, etc
- Lifting in chemical/power plants
- Lifting on nuclear plants
- Circular slew operations as well as straight moves with load in hook are possible

nothing too heavy, nothing too high