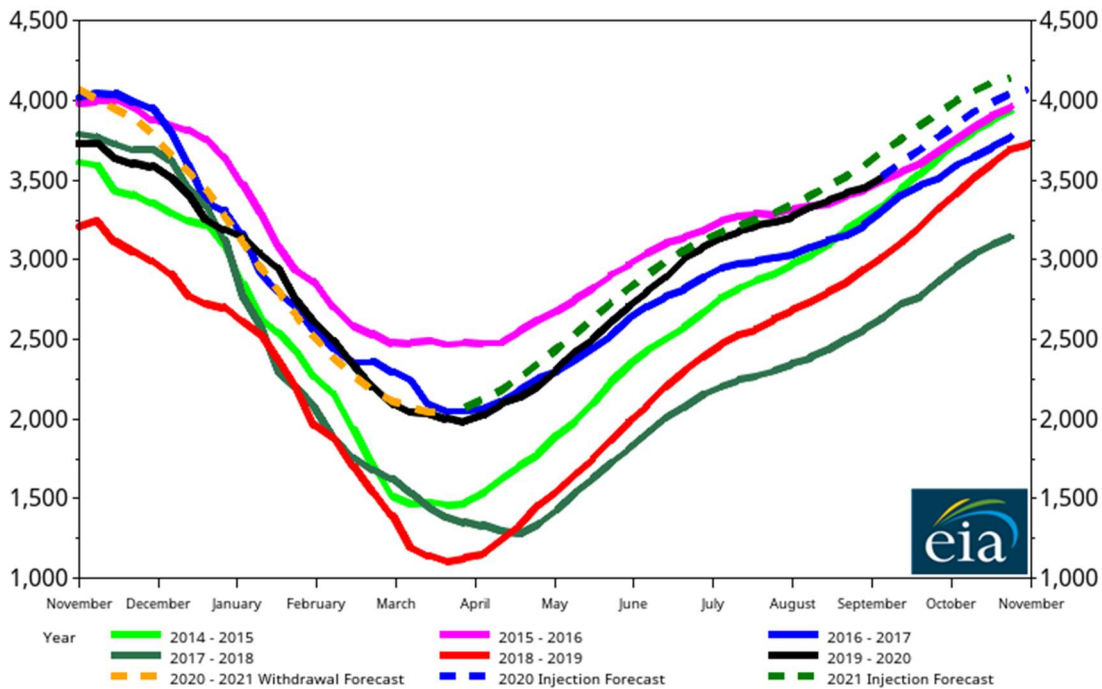




Brought to you by **Industrial Info Resources** (Sugar Land, Texas) – **IIR Energy** is partnering with **Fundamental Analytics** whose **Trading Analytics Platform** powers this weekly report which can be generated after the release of the latest EIA data. Providing you with the latest intelligence through the graphical visualization of these numbers in the charts below

EIA [reports](#) “Working gas in storage was 3,525 Bcf as of Friday, September 4, 2020, according to EIA estimates. This represents a net increase of 70 Bcf from the previous week. Stocks were 528 Bcf higher than last year at this time and 409 Bcf above the five-year average of 3,116 Bcf. At 3,525 Bcf, total working gas is above the five-year historical range.”

EIA Weekly Natural Gas Storage Report  
 Total Natural Gas Storage (bcf) with Forecast  
 Friday, September 4, 2020 3,525 Bcf Weekly Change 70 Bcf



Source: IIR Fundamental Analytics



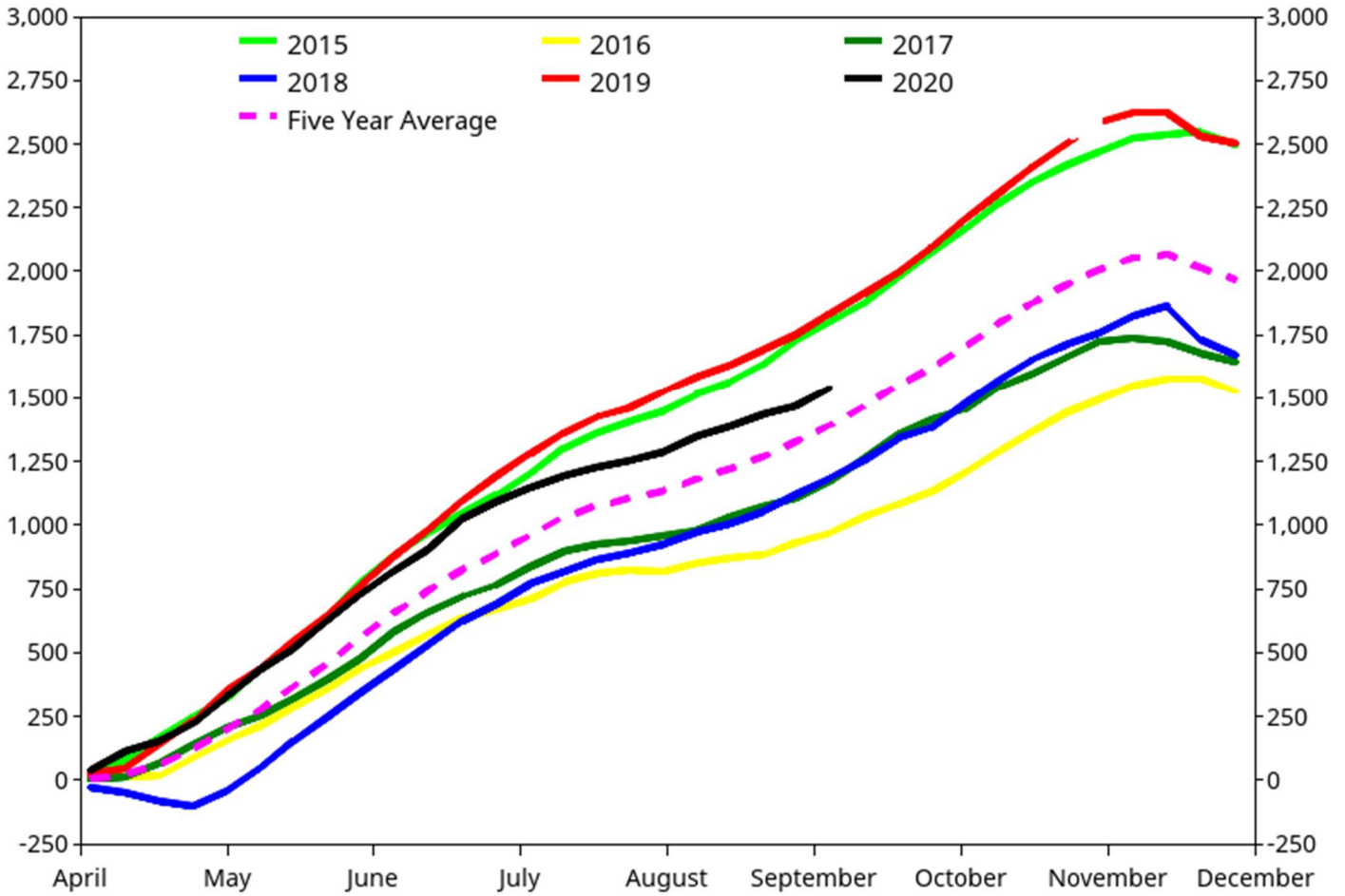
## EIA Weekly Natural Gas Storage Data Report As of Friday, September 4, 2020

	Bcf in Storage	Week Change	Last Week Storage	Week Change	Last Year Storage
East Region	805	16	789	14	739
Midwest Region	953	29	924	20	864
Mountain Region	216	4	212	0	183
Pacific Region	308	4	304	-2	275
South Region	1,243	18	1,225	2	958
Salt Region	335	4	331	-3	199
Non Salt Region	908	13	895	6	759
<b>Total Storage</b>	<b>3,525</b>	<b>70</b>	<b>3,455</b>	<b>35</b>	<b>3,019</b>

	Total Storage Working Gas	Week Change	Last Year Storage	Last Year Change	Delta to Last Year	Five Year Average	Five Year Change	Delta to Five Year Average	NYMEX Average Price	Week Change
07AUG20	3,332	58	2,738	59	594	2,915	42	417	\$2.18	0.37
14AUG20	3,375	43	2,797	60	578	2,960	46	415	\$2.20	0.03
21AUG20	3,420	45	2,857	84	563	3,022	61	398	\$2.40	0.19
28AUG20	3,455	35	2,941	78	514	3,085	64	370	\$2.54	0.14
04SEP20	3,525	70	3,019	84	506	3,160	75	365	\$2.54	0.00
11SEP20	.	.	3,103	102	.	3,245	85	.	\$2.40	-0.14
18SEP20	.	.	3,205	112	.	3,315	70	.	.	.
25SEP20	.	.	3,317	98	.	3,401	86	.	.	.



September 4, 2020 **Summer Season Storage Cumulative Injection** Cumulative Injection 1,539 bcf Average 1,392 bcf







## EIA Weekly Natural Gas Storage Data Report By Regions

	East Region	Week Chg	Last Year Storage	Last Year Delta	Five Year Avg.	Five Year Delta	Midwest Region	Week Chg	Last Year Storage	Last Year Delta	Five Year Avg.	Five Year Delta	Mountain Region	Week Chg	Last Year Storage	Last Year Delta	Five Year Avg.	Five Year Delta
07AUG20	738	20	634	104	679	59	856	26	729	127	746	110	206	4	164	42	183	23
14AUG20	750	12	660	90	700	50	880	24	760	120	772	108	209	3	168	41	186	23
21AUG20	775	25	682	93	724	51	904	24	790	114	803	101	212	3	173	39	189	23
28AUG20	789	14	714	75	747	42	924	20	827	97	835	89	212	0	177	35	192	20
04SEP20	805	16	739	66	769	36	953	29	864	89	868	85	216	4	183	33	196	20
11SEP20	.	.	763	.	794	.	.	.	898	.	902	.	.	.	188	.	199	.
18SEP20	.	.	794	.	816	.	.	.	934	.	933	.	.	.	194	.	204	.
25SEP20	.	.	826	.	842	.	.	.	973	.	965	.	.	.	199	.	208	.

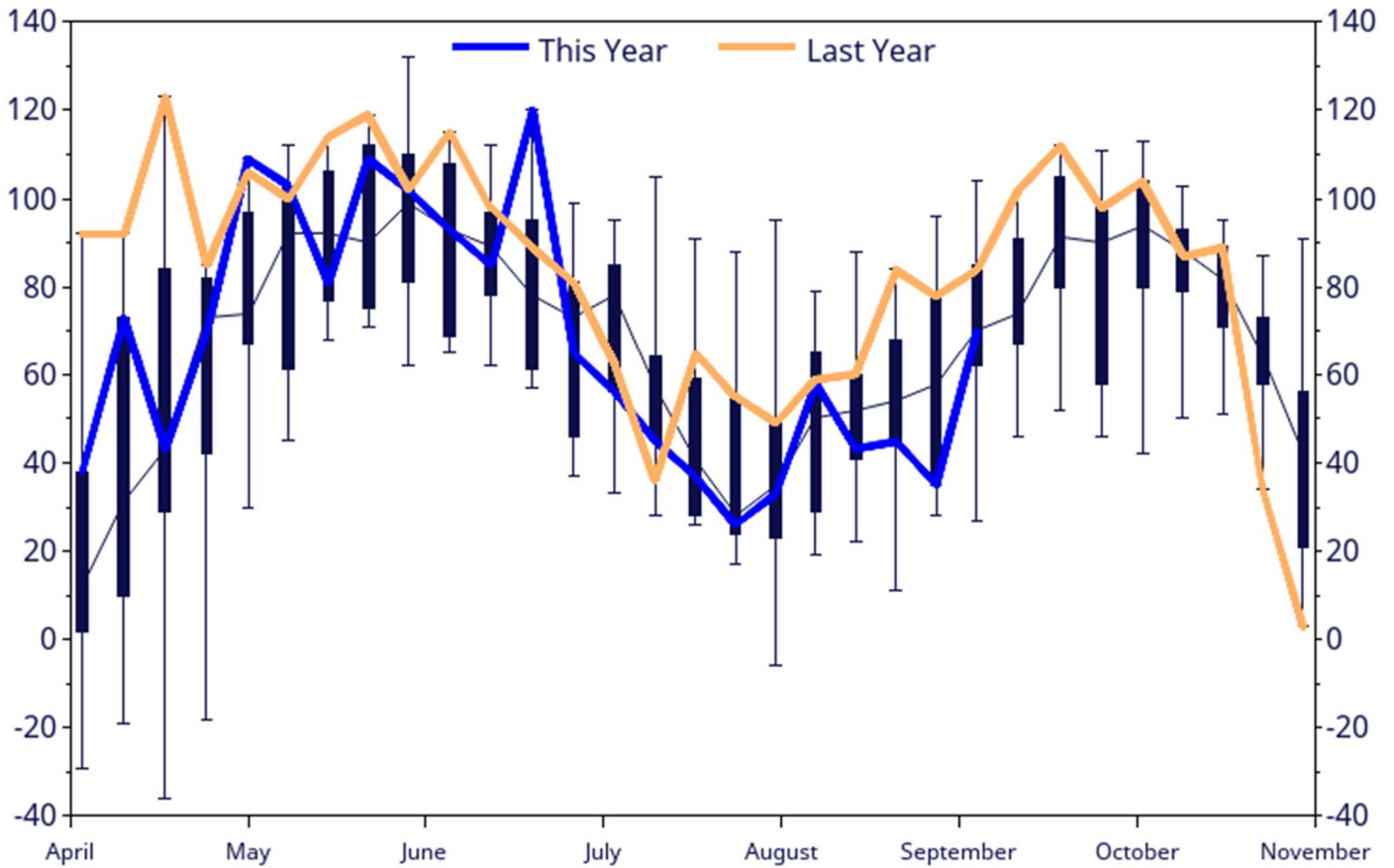
	Pacific Region	Week Chg	Last Year Storage	Last Year Delta	Five Year Avg.	Five Year Delta	South Region	Week Chg	Last Year Storage	Last Year Delta	Five Year Avg.	Five Year Delta	Salt Region	Week Chg	Last Year Storage	Last Year Delta	Five Year Avg.	Five Year Delta
07AUG20	314	3	272	42	292	22	1219	5	939	280	1014	205	337	1	214	123	257	80
14AUG20	313	-1	274	39	293	20	1223	4	935	288	1010	213	335	-2	205	130	250	85
21AUG20	306	-7	278	28	295	11	1223	0	934	289	1011	212	334	-1	199	135	245	89
28AUG20	304	-2	276	28	296	8	1225	2	947	278	1015	210	331	-3	197	134	244	87
04SEP20	308	4	275	33	297	11	1243	18	958	285	1030	213	335	4	199	136	250	85
11SEP20	.	.	279	.	301	.	.	.	974	.	1049	.	.	.	200	.	256	.
18SEP20	.	.	286	.	305	.	.	.	998	.	1058	.	.	.	207	.	256	.
25SEP20	.	.	291	.	308	.	.	.	1029	.	1078	.	.	.	220	.	264	.



## Natural Gas Injection Season - Total Working Gas Injection Distribution

As of: September 4, 2020

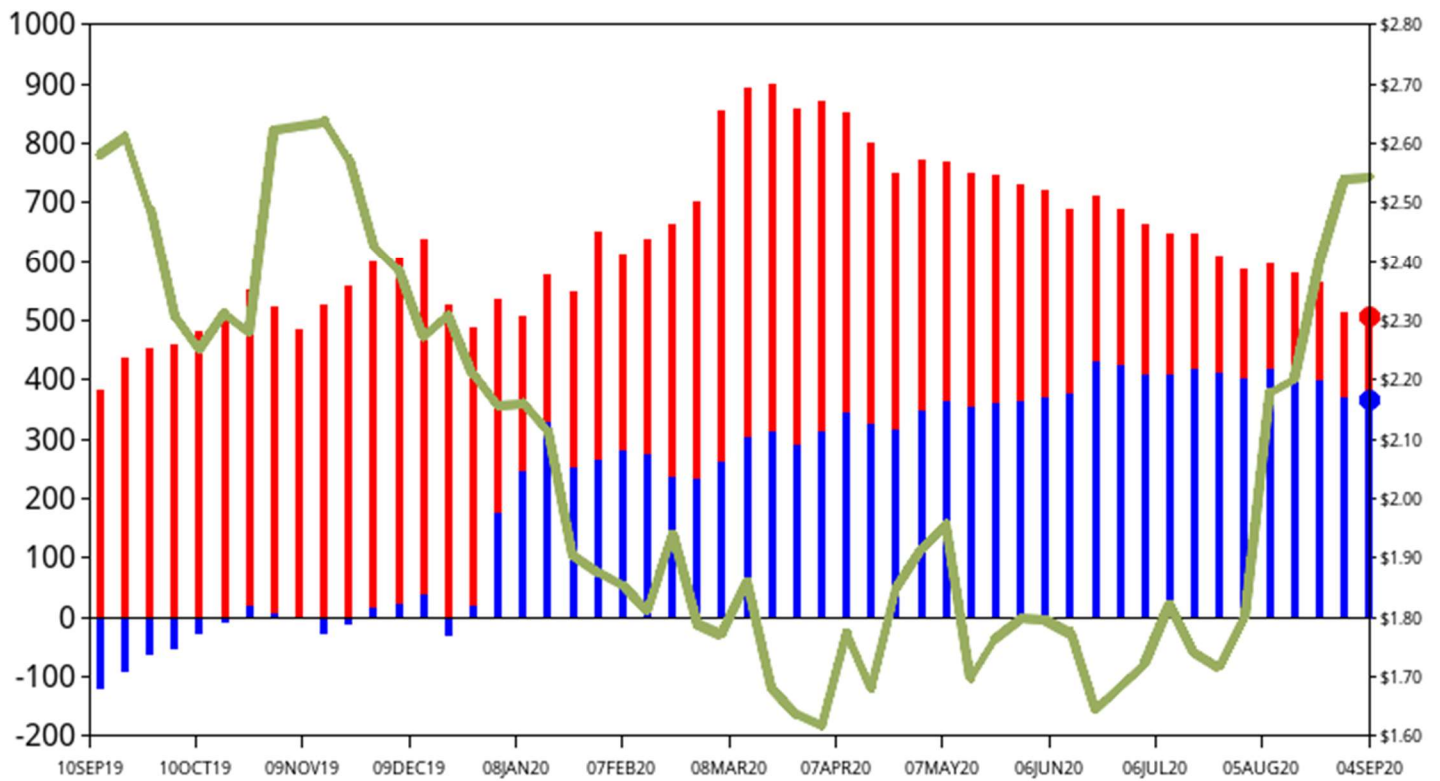
70 bcf





Relationship of Storage Levels to Natural Gas Front Month Weekly Average Price

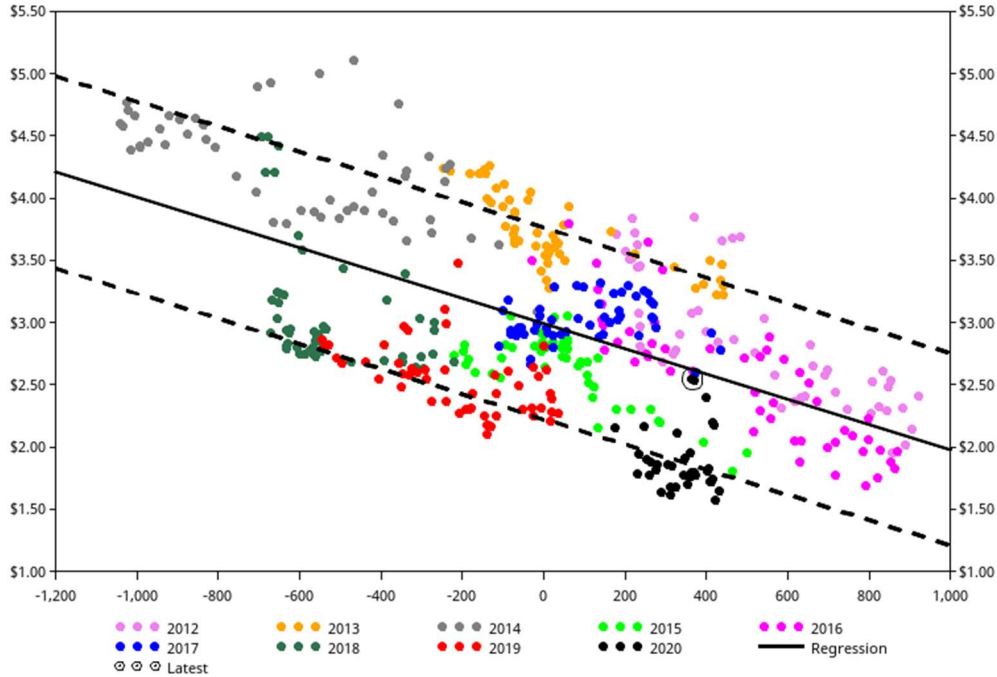
Current Storage (bcf):	3,525	5-Year Average Storage(bcf):	3,085
Last Year Storage (bcf):	3,019	Difference to 5-Year Average (bcf):	370
Difference to Last Year (bcf):	514	Natural Gas Front Month Weekly Average Price:	\$2.54



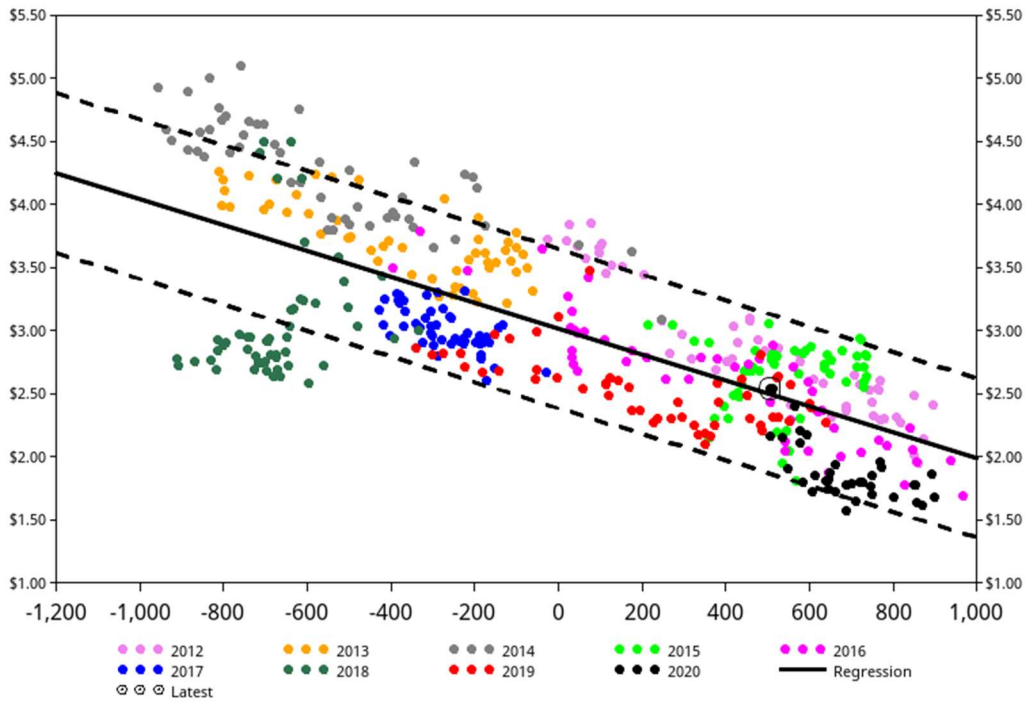




Natural Gas Front Month Weekly Average Price as function of the Delta to the 5-Year Average Storage

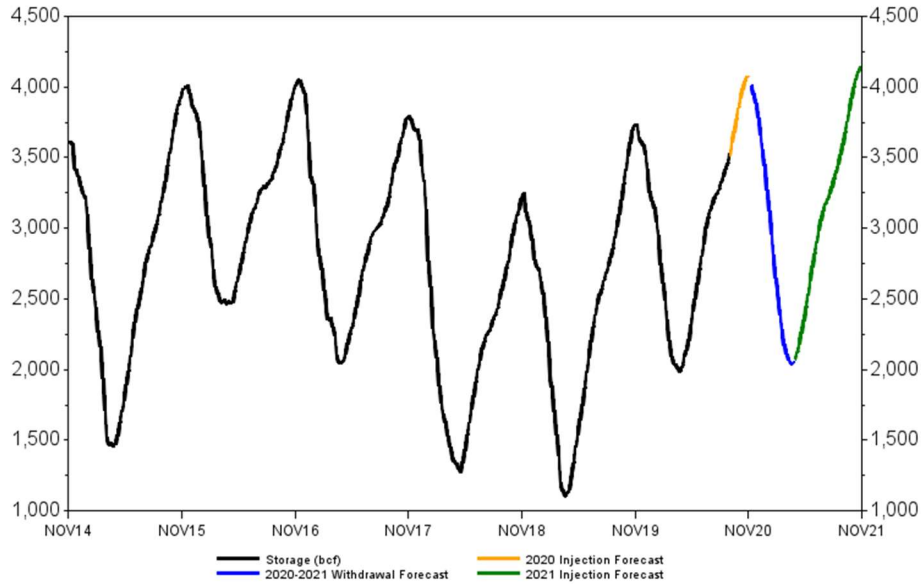


Natural Gas Front Month Weekly Average Price as function of the Delta to Last Year Storage





**EIA Weekly Storage Report**  
**Total Working Gas Bcf with Forecast**  
**September 4, 2020 3,525 Bcf Weekly Change 70 Bcf**



	Total Storage	Week Change	Last Year	Last Year	Last Year Chg	Last Year	5-Year Average	5-Year Avg	South	Salt Caverns	Non-Salt Caverns	East	Midwest	Mountain	Pacific
26JUN20	3,077	65	28JUN19	2,390	81	687	2,655	422	1,222	368	854	639	740	173	304
03JUL20	3,133	56	05JUL19	2,471	62	662	2,725	408	1,226	364	862	657	761	180	310
10JUL20	3,178	45	12JUL19	2,533	36	645	2,771	407	1,228	359	869	672	780	186	312
17JUL20	3,215	37	19JUL19	2,569	65	646	2,800	415	1,221	349	872	693	799	190	311
24JUL20	3,241	26	26JUL19	2,634	55	607	2,830	411	1,211	339	872	706	815	196	313
31JUL20	3,274	33	02AUG19	2,689	49	585	2,873	401	1,214	336	878	718	830	202	311
07AUG20	3,332	58	09AUG19	2,738	59	594	2,915	417	1,219	337	883	738	856	206	314
14AUG20	3,375	43	16AUG19	2,797	60	578	2,960	415	1,223	335	888	750	880	209	313
21AUG20	3,420	45	23AUG19	2,857	84	563	3,022	398	1,223	334	889	775	904	212	306
28AUG20	3,455	35	30AUG19	2,941	78	514	3,085	370	1,225	331	895	789	924	212	304

Latest Data	Total Storage	Week Change	Last Year	Last Year	Last Year Chg	Delta to Last Year	5-Year Average	Delta to 5-Year Avg	South	Salt Caverns	Non-Salt Caverns	East	Midwest	Mountain	Pacific
04SEP20	3,525	70	06SEP19	3,019	84	506	3,160	365	1,243	335	908	805	953	216	308

Fall 2020 Forecast      NOV2020    4,068    bcf  
 Spring 2021 Forecast    APR2021    2,126    bcf