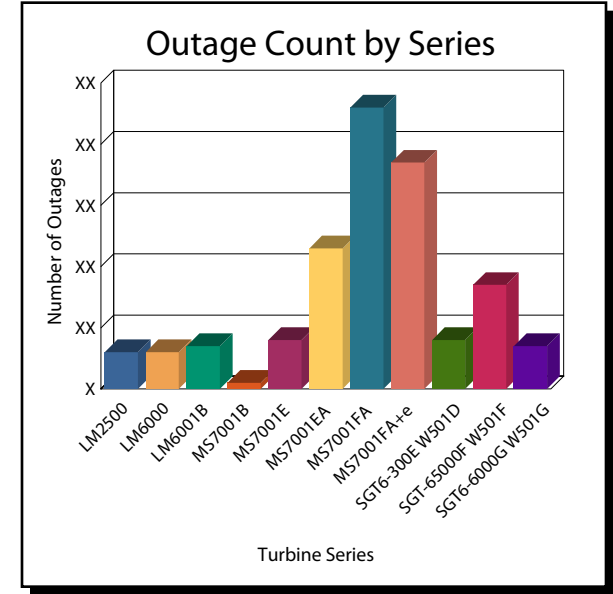
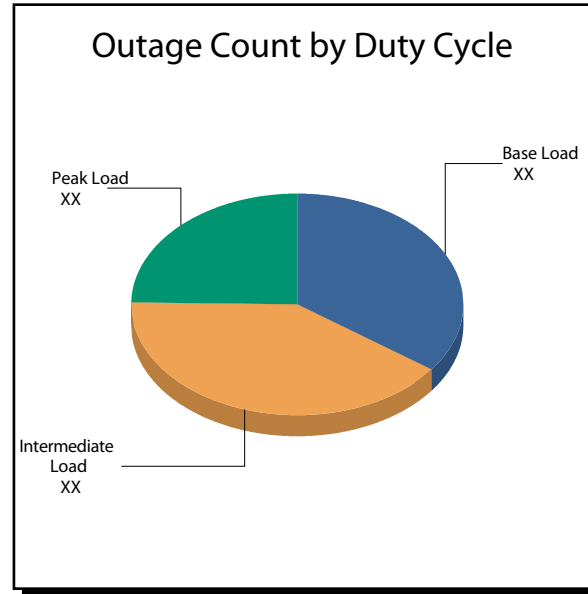
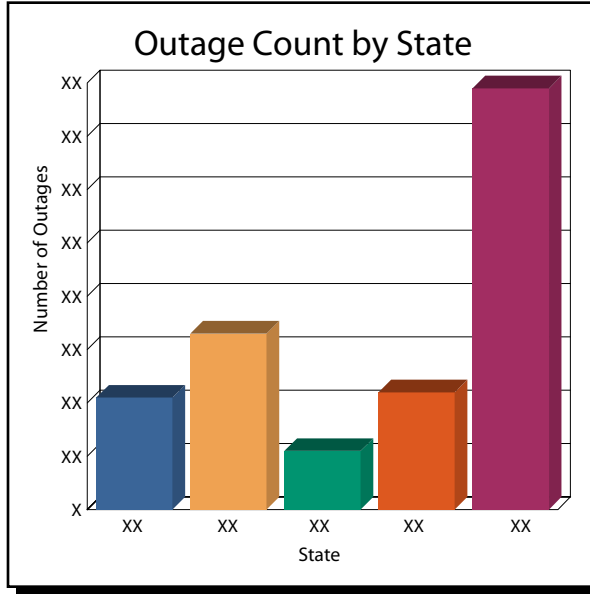




TBH - Southwest



TBH - Southwest

OWNER / PLANT	UNIT / LOCATION	TYPE	START / END	DURATION / CAPACITY
Air Liquide America Corporation	Unit 01 GT/HRSG	Simple Cycle Combustion Turbine	XX-XX-XXXX	XX Days
Port Neches Air Separation	Port Neches, TX	MS6001B	XX-XX-XXXX	XX MW
Constellation Energy Group	Colorado Bend 02A CT/HRSG	Combined Cycle Combustion Turbine	XX-XX-XXXX	XX Days
Colorado Bend Energy Center	Wharton, TX	MS7001EA	XX-XX-XXXX	XX MW
Acadia Power Partners LLC	Acadia 25 CT/HRSG	Combined Cycle Combustion Turbine	XX-XX-XXXX	X Days
Acadia Energy Center	Eunice, LA	SGT6-5000F W501F	XX-XX-XXXX	XXX MW
Acadia Power Partners LLC	Acadia 25 CT/HRSG	Combined Cycle Combustion Turbine	XX-XX-XXXX	XX Days
Acadia Energy Center	Eunice, LA	SGT6-5000F W501F	XX-XX-XXXX	XXX MW
Signal Hill Power LLC	Signal Hill B CT/HRSG	Combined Cycle Combustion Turbine	XX-XX-XXXX	X Days
Signal Hill Power Station	Wichita Falls, TX	LM2500	XX-XX-XXXX	XX MW
Union Power Partners LP	Union 02 CT/HRSG 03	Combined Cycle Combustion Turbine	XX-XX-XXXX	XX Days
Union Power Station	El Dorado, AR	MS7001FA+e	XX-XX-XXXX	XXX MW
Lower Colorado River Authority	Lost Pines 01 A GT/HRSG	Combined Cycle Combustion Turbine	XX-XX-XXXX	X Days
Lost Pines I	Bastrop, TX	SGT6-5000F W501F	XX-XX-XXXX	XXX MW